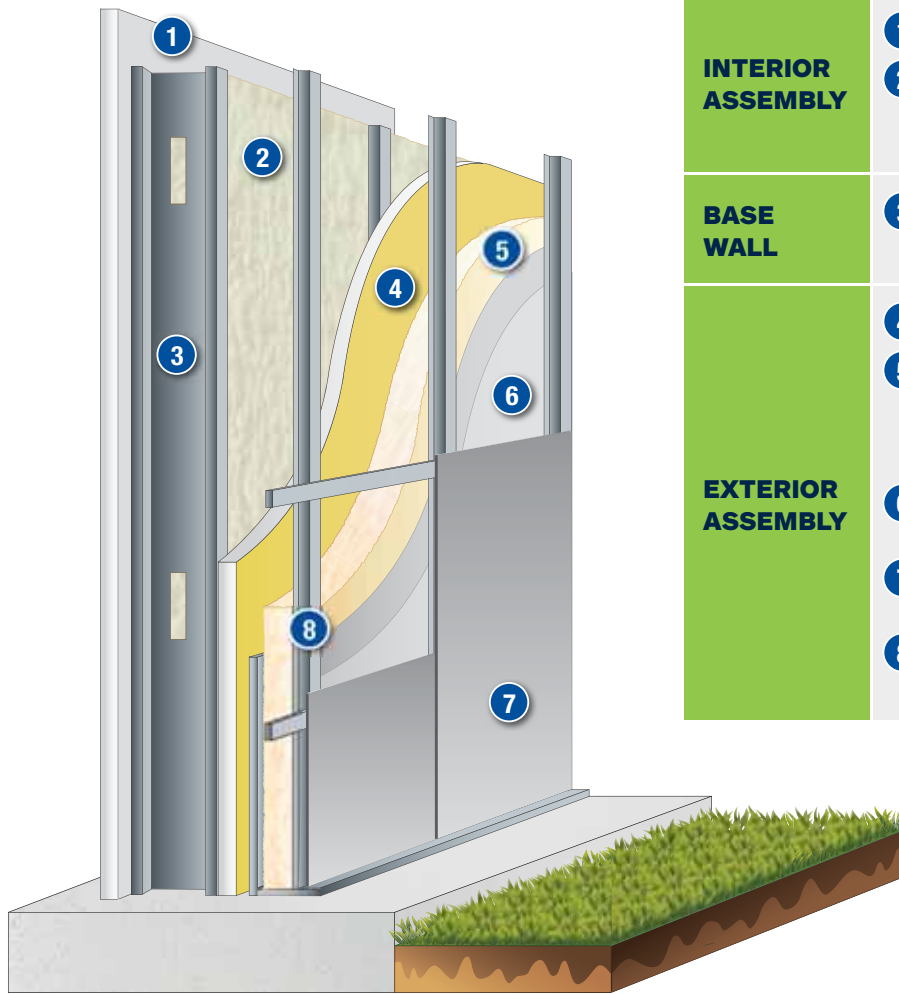


NFPA 285 COMPLIANT WALL ASSEMBLY



UL FILE NO. R40016



INTERIOR ASSEMBLY	1 Gypsum board	5/8" Type X gypsum wallboard
	2 Insulation	2" (R-14) of medium density SealTite™ Pro Closed Cell spray applied polyurethane foam
BASE WALL	3 Steel Stud	Steel stud wall
EXTERIOR ASSEMBLY	4 Wallboard	1/2" Exterior gypsum wallboard
	5 Insulation	3 1/2" (R-24) of medium density SealTite Pro Closed Cell spray applied polyurethane foam
	6 Intumescent Coating	18 mils WFT DC315 by IFTI with protective coating
	7 Metal Panel	PAC-CLAD Flush Panel Series wall panels
	8 Cladding Attachment	4" deep horizontal Z-girts 1" "Hat Channel"



100 Enterprise Drive • Cartersville, GA 30120 • 844.922.2355

www.carlisesfi.com

© 2020 Carlisle. 03.16.20 CSFI-11780 - "NFPA 285 Assembly Sell Sheet"
Carlisle and SealTite are trademarks of Carlisle. Sher-Cryl is a trademark of Sherwin Williams.