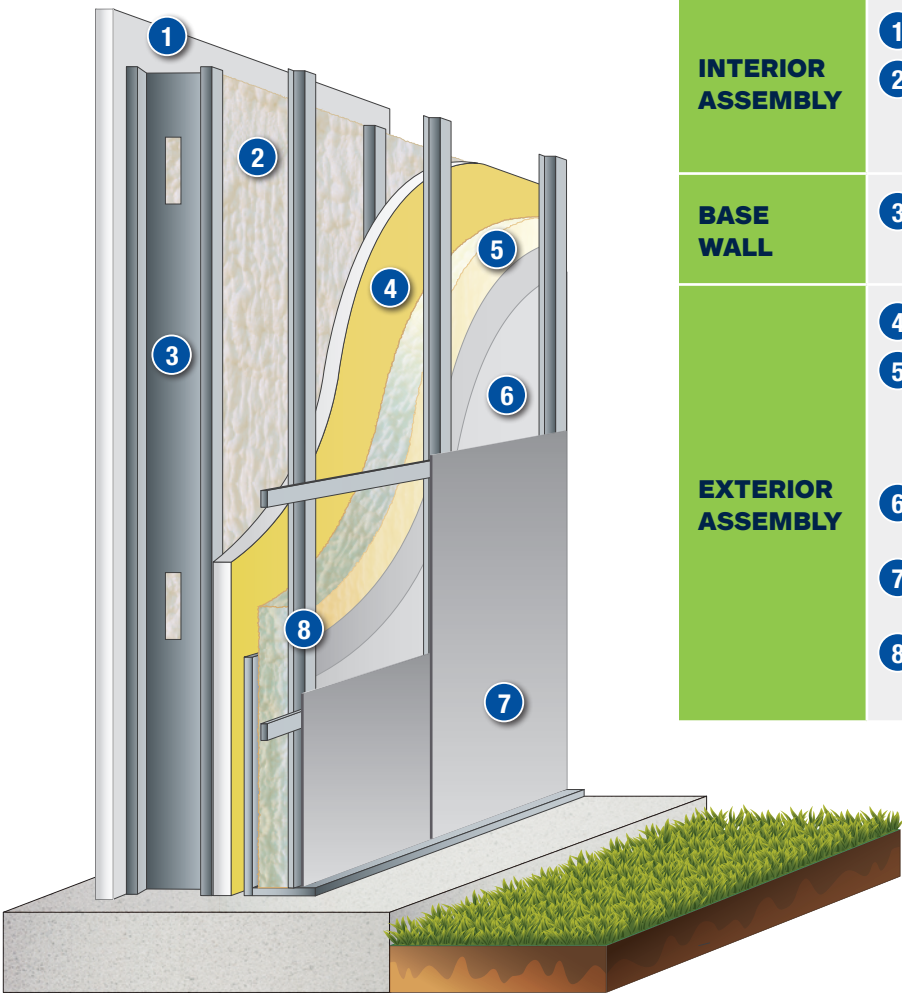


UL FILE NO.  
R40016



INTERIOR ASSEMBLY	1	Gypsum board	5/8" Type X gypsum wallboard
	2	Insulation	2" (R-14) of medium density SealTite™ Pro Closed Cell spray applied polyurethane foam
BASE WALL	3	Steel Stud	Steel stud wall
EXTERIOR ASSEMBLY	4	Wallboard	1/2" Exterior gypsum wallboard
	5	Insulation	3 1/2" (R-24) of medium density SealTite Pro Closed Cell spray applied polyurethane foam
	6	Intumescent Coating	16 mils WFT DC315 by IFTI with protective coating
	7	Metal Panel	PAC-CLAD Flush Panel Series wall panels
	8	Cladding Attachment	4" deep horizontal Z-girts 1" "Hat Channel"

